

Thoroughly read manual furnished with this product and be familiar with controls. Do not allow individuals to operate winch without understanding safe operation and procedures for equipment.

PROPRIETARY STATEMENT

The Powerwinch 915 Trailer Winch is a product of Scott Fetzner Electrical Group or SFEG, located in Fairview, Tennessee, USA. The information contained or disclosed in this document is considered proprietary to SFEG. Every effort has been made to ensure that the information presented in this document is accurate and complete. However, SFEG assumes no liability for errors or any damages that result from the use of this document.

The information contained in this manual pertains to the current configuration of the models listed on the title page. Earlier model configurations may differ from the information given. SFEG reserves the right to cancel, change, alter or add any parts and assemblies, described in this manual, without prior notice.

SFEG agrees to allow the reproduction of this document for use with SFEG products only. Any other reproduction or translation of this document in whole or part is strictly prohibited without prior written approval from SFEG.

TABLE OF CONTENTS

SAFETY INFORMATION.....iii

SPECIFICATIONS.....iv

 WINCH SPECIFICATIONS.....iv

 APPROXIMATE ROLLING LOAD CAPACITIES (VALUES ARE IN POUNDS).....iv

 WINCH & BOAT CAPACITIES (VALUES ARE IN POUNDS).....iv

INSTALLATION.....1

 MOUNTING UNIT.....1

 ASSEMBLING PULLEY BLOCK.....1

 DOUBLE LINING WINCH.....1

 WIRING UNIT.....2

OPERATION.....3

 UNLOADING BOAT.....3

 LOADING BOAT.....3

 EMERGENCY HAND CRANK.....4

MAINTENANCE.....4

 LUBRICATION.....4

 ADJUSTING BRAKE.....4

 REPLACING CABLE.....5

 TROUBLESHOOTING GUIDE.....6

ILLUSTRATED PARTS LIST.....7

 INTERNAL PARTS7

 EXTERNAL & ACCESSORIES.....9

WARRANTY.....11

SAFETY INFORMATION

The following Safety Precautions Must be Followed at ALL Times. Failure to follow warnings and cautions in this manual could result in serious injury and/or property damage.



WARNING

This product can expose you to chemicals including Di-isodecyl phthalate (DIDP), Vinyl Chloride and Cumene, which are known to the state of California to cause cancer or birth defects or other reproductive harm. For more information visit www.P65warnings.ca.gov.



WARNING

ALWAYS unplug wiring harness before attempting to install, relocate, service or perform maintenance on winch.



WARNING

NEVER use winch to lift or move people or animals.



WARNING

NEVER use winch for overhead lifting.



WARNING

NEVER attempt to pull a load greater than rated load of winch.



WARNING

ALWAYS stand away from winch during operation. ALWAYS stand clear of area behind and between load and winch. Serious injury could occur if cable breaks.



WARNING

NEVER use winch to exclusively hold, support or permanently secure load. Use separate straps to support load.



WARNING

NEVER wear loose fitting clothes, scarves, ties or jewelry when operating winch. Loose clothing can become caught in moving parts.



WARNING

ALWAYS block vehicle wheels to help prevent vehicle from moving when pulling a load with winch.



CAUTION

ALWAYS use recommended cable. Never substitute rope for cable.



CAUTION

ALWAYS keep hands clear of cable spool (drum area).



CAUTION

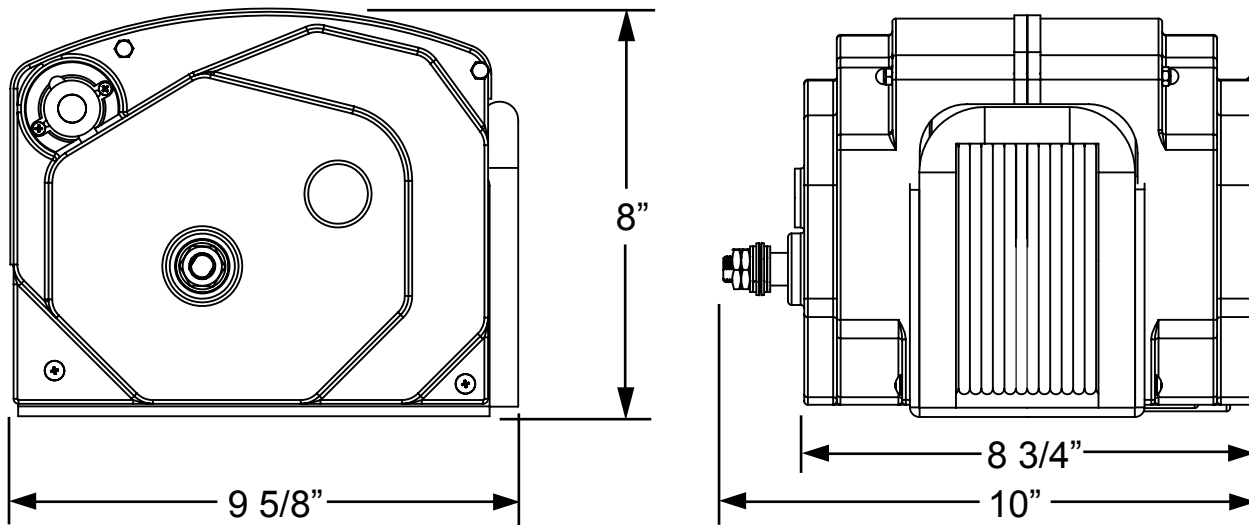
ALWAYS wear leather gloves when handling cable.

SPECIFICATIONS

Various load conditions affect winch performance. The line pull required for a specific application depends on the weight of the load, condition of the trailer rollers, and the degree of the loading ramp incline. The charts below are based on a single line pull and provided as a guideline in calculating pulling capabilities.

⚠ WARNING Cable fasteners on this or any winch are not designed to hold rated loads independently. ALWAYS leave a minimum of five wraps of cable on drum to achieve rated load values.

WINCH SPECIFICATIONS



Line Speed @ Capacity (FPM)	Gear Ratio	Voltage	Circuit Breaker	Unit Weight
10	450: 1	12 VDC	60 amps	40 lbs

Noise Level during Operation: less than 98db (A).

APPROXIMATE ROLLING LOAD CAPACITIES (VALUES ARE IN POUNDS)

% Incline	Level	5%	10%	20%	30%	50%	70%	100%
Incline	0°	3°	6°	11°	17°	26°	35°	45°
	32000	20010	15060	10200	7830	5580	4590	3870

- A 10% incline (6°) is 1 foot rise in 10 feet.
- Convert from pounds (lbs) to kilograms (kgs) divide by 2.2.
- Capacity can be increased by using pulley block.

WINCH & BOAT CAPACITIES (VALUES ARE IN POUNDS)

Vertical Lift Capacity	Double Line Pull	Approximate Boat Weight*	Approximate Boat Size*
3200	5900	9500	Up to 29 Feet

- * Boat size and weight is approximate and varies depending on boat type.
When calculating boat weight, use fully loaded weight that includes boat, motor, fuel, water, gear etc.

INSTALLATION

MOUNTING THE UNIT

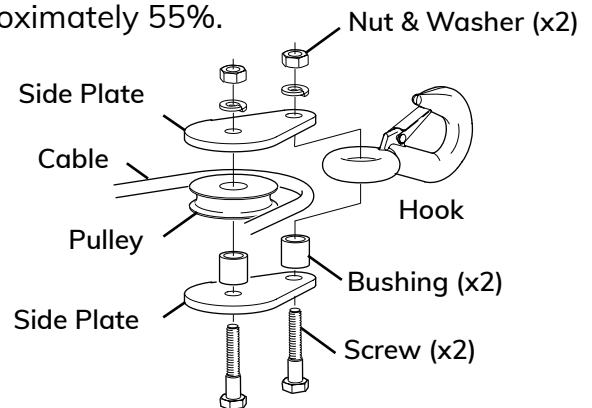
The following instructions are for standard mounting of the winch. The winch can be mounted on the trailer in the same position and location as an existing hand winch.

1. Remove existing hand winch.
2. Position unit on trailer mount stand.
3. Confirm that winch's hook and bow eye on boat are at the same height when boat fully loaded on trailer. If bow eye is too high, extra pull is required of winch and added stress is exerted bow eye and stern.
 - A. If necessary to create equal height, raise or lower winch stand. In most cases, trailer manufacturers have adapters available for use with a winch.
4. Confirm that there is a minimum of 12 inches clearance between winch and bow eye when boat is fully loaded. If necessary, extend bow stop to obtain clearance.
5. Using a minimum of two (2) $\frac{3}{8}$ " grade 5 machine bolts and lock nuts. If existing mounting holes do not line up with winch, use bottom of winch as a template and drill two (2) $\frac{7}{16}$ " holes in mounting surface of the trailer stand.
6. If using a pulley block, install a $\frac{3}{8}$ " eyebolt on stand as close as possible to base of winch. See illustration on page 2.

ASSEMBLING PULLEY BLOCK*

Use of pulley block can increase pulling capacity approximately 55%.

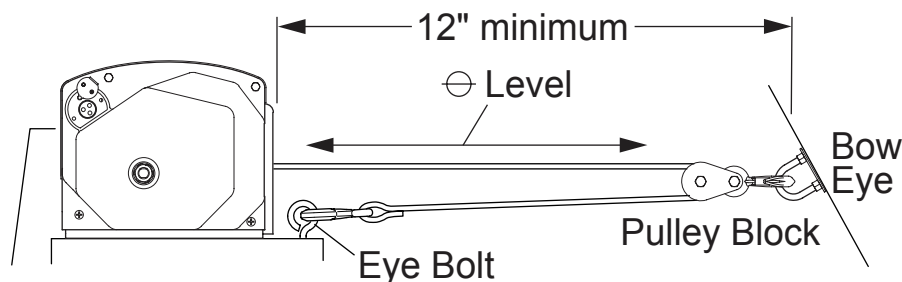
1. Place two screws through one of the tear drop plates and hold in place.
2. Slide a bushing over each screw.
3. Slide pulley wheel and hook over bushings as shown. The components fit loosely on bushings.
4. Wrap cable around pulley.
5. Place second tear drop plate over screws and secure using washers and nuts provided.
6. Mount an eyebolt next to winch. Eyebolt should be mounted as close to winch as possible. Eyebolt is furnished by installer.



*Only included with cable

DOUBLE LINING WINCH

1. With cable threaded through block, hook pulley block to eye on bow.
2. Power out cable and attach cable hook to eyebolt next to winch.
3. Power in cable.



WIRING UNIT

**WARNING**

ALWAYS disconnect battery before working on electrical equipment.

**WARNING**

ALWAYS use recommended wire size and rated circuit breakers. Failure to use furnished and recommended sizes can cause a fire hazard and void warranty.

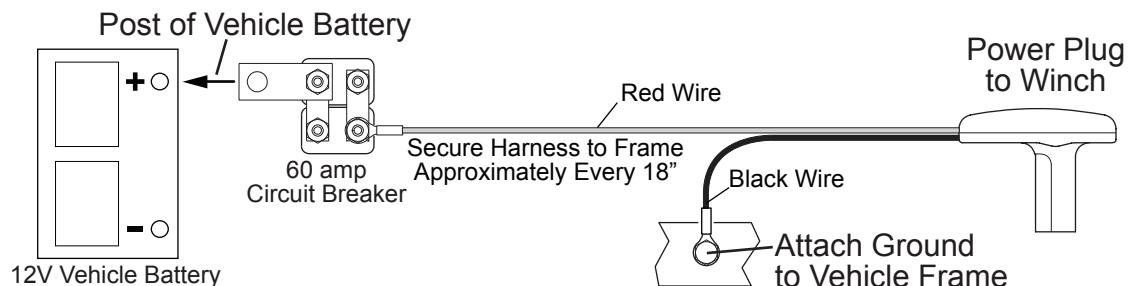
NOTICE

ALWAYS avoid sources of heat when routing wiring.

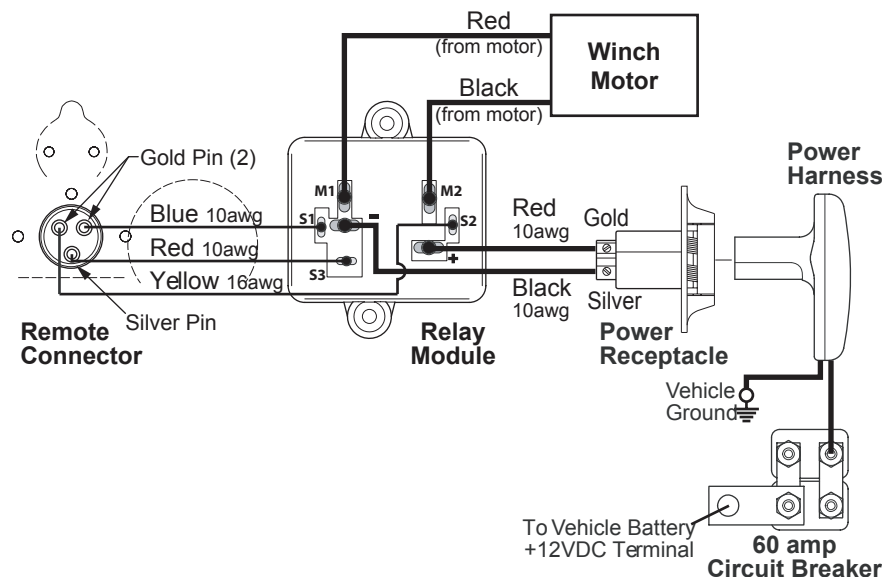
NOTICE

ALWAYS avoid sharp edges that can cut or fray wire insulation when routing wiring.

The following instructions are for permanently wiring winch. If installing with kit, follow the directions with kit.



1. Attach circuit breaker to battery's POSITIVE (+) post or positive (+) terminal of starter solenoid.
2. Attach ground wire (black) to vehicle frame. Clean metal frame with a wire brush or equivalent, attach the ground lug using a $\frac{5}{16}$ " bolt and lock nut (bolt and nut not furnished).
3. Route wire under vehicle and along frame. Avoid sharp edges and moving parts. Secure wire to frame approximately every 18" using nylon ties or equivalent.
4. Attach bumper bracket to vehicle using supplied template and fasteners.



OPERATION



WARNING

To avoid personal injury and property damage, ALWAYS clear area around and behind boat of people, animals, and obstructions before loading or unloading boat.



WARNING

NEVER stand between load or anchor point and winch. Serious personal injury could occur if cable breaks.



WARNING

NEVER use winch alone to secure boat to trailer during transit. Use separate straps or equivalent to secure boat to trailer.

NOTICE

ALWAYS wear leather gloves when handling cable. Steel cable can cause serious damage to hands.

UNLOADING BOAT

1. If not previously done, attach winch cable hook to bow eye on boat.
2. Connect wire harness to winch. Plug goes into socket on right side of winch.
3. Connect wired remote. Plug goes into socket on left side of winch.
4. Remove tie down straps from boat.
5. Using switch on remote, power out cable until boat is unloaded.
6. When boat is in water, release cable hook.
7. While maintaining tension in cable, press switch on remote. Roll cable up completely.

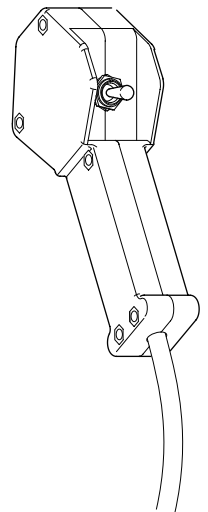
DO NOT allow cable to roll up loosely, damage to cable and winch components could occur.

A. Cable will wind over top cable spool.

NOTICE

DO NOT allow cable hook to roll into winch. Damage to level wind plate can occur.

8. Secure cable hook to prevent any accidental injury or damage.



LOADING BOAT

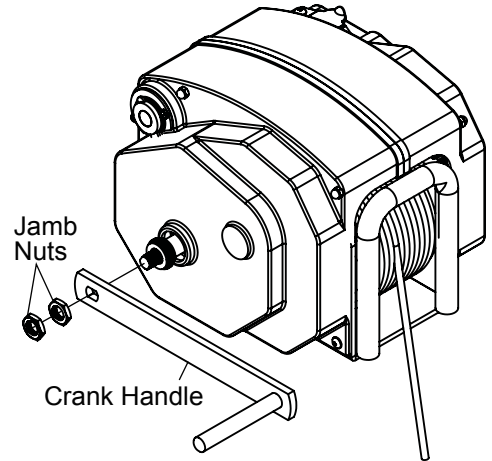
1. Connect wire harness to winch. Using supplied harness insert plug into winch and bumper socket.
2. Connect wired remote. Plug goes into socket on left side of winch.
3. Align boat and trailer.
4. Power out cable and attach cable hook to bow eye.
5. Step clear of cable, winch and boat.
6. Press and hold remote switch. Power in cable until boat touches bow stop. Release switch.
7. When fully loaded, secure boat to trailer.

EMERGENCY HAND CRANK

An emergency hand crank is available when there is no power (i.e. dead battery).

! WARNING NEVER use hand crank to assist a running motor. Serious personal injury can occur.

1. Disconnect wire harness from winch.
2. Remove two jamb nuts from the shaft on left side of winch.
3. Place emergency handle onto shaft and secure to shaft with one of the nuts removed previously. Tighten nut snugly against handle.
4. Turn crank handle counterclockwise to wind in cable and clockwise to release cable.
5. After boat has been secured on trailer, remove handle from shaft. Replace nuts on shaft. It may be necessary to adjust brake tension before using winch again. Refer to Adjusting Brake section below.
6. Store handle.



! CAUTION ALWAYS remove all tools used for manual override operation before operating winch with electrical power.

MAINTENANCE

LUBRICATION

The following should be performed a minimum of once a year or when unit is placed in storage.

Cable: Lubricate cable with Whitmore's Wire Rope Spray, WD40 or equivalent. Spray shaft and cable as cable is being wound.

Gears: Remove the covers and lubricate the gears with a lithium base grease. Be careful not to get grease on the clutch lining (refer to item 4 on page 7).

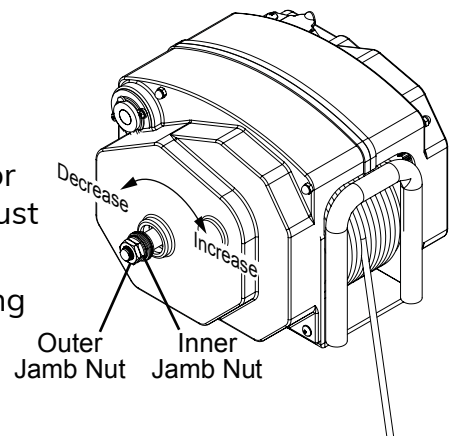
ADJUSTING BRAKE

The winch is equipped with a friction brake that holds the load when the power is off. The brake requires adjustment if the load creeps while the power is off or if the brake slips while powering the load in or out.

1. Disconnect the boat from the winch.
2. Locate the jamb nuts on the left side of the winch.
3. Loosen the outer jamb nut.
4. Turn the inner jamb nut clockwise to increase the load capacity or counterclockwise to decrease the load capacity. The inner nut must be tight enough to prevent the load from slipping or creeping.

NOTICE DO NOT over tighten the inner nut. Over tightening the inner nut can shorten the motor life.

5. Tighten the outer nut against the inner nut.



REPLACING CABLE

! WARNING

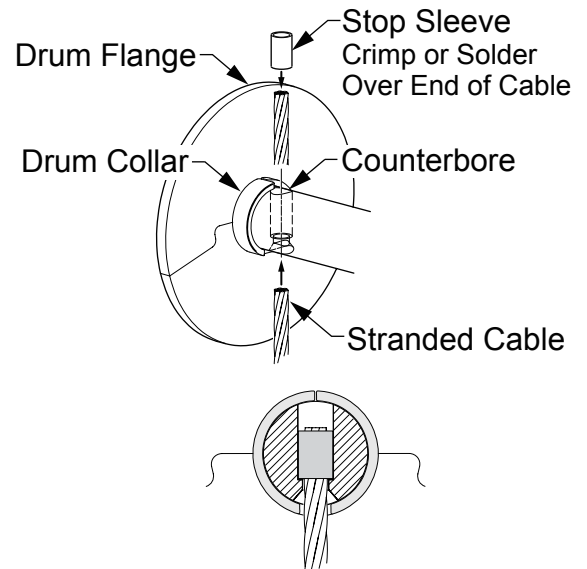
ALWAYS use Powerwinch replacement cable. Winch rating and cable strength are matched for safe and optimum performance.

NEVER replace the cable with rope.

! CAUTION

ALWAYS wear leather gloves when handling the cable. Steel cable can cause serious damage to hands.

1. Power out the cable. Disconnect the wire harness after the cable is fully out.
2. Cut the old cable off approximately 2" from the cable drum.
3. Slide the collar away from the cable then push the old cable out of the drum.
4. Insert the new cable through the shaft. The cable must be inserted through the side opposite the counter bore.
5. Insert the stop sleeve over the end of the cable until the cable is flush with the end of the stop. Solder or crimp the stop onto the cable.
6. Pull the cable back through the shaft until the stop is seated in the counter bore.
7. Slide the collar around the cable. The notch on the collar fits around the cable.
8. Reconnect wire harness to unit. Power-in cable, keeping tension on cable as it is winding. Cable must wind from top of cable spool.



Completed Installation

NOTICE

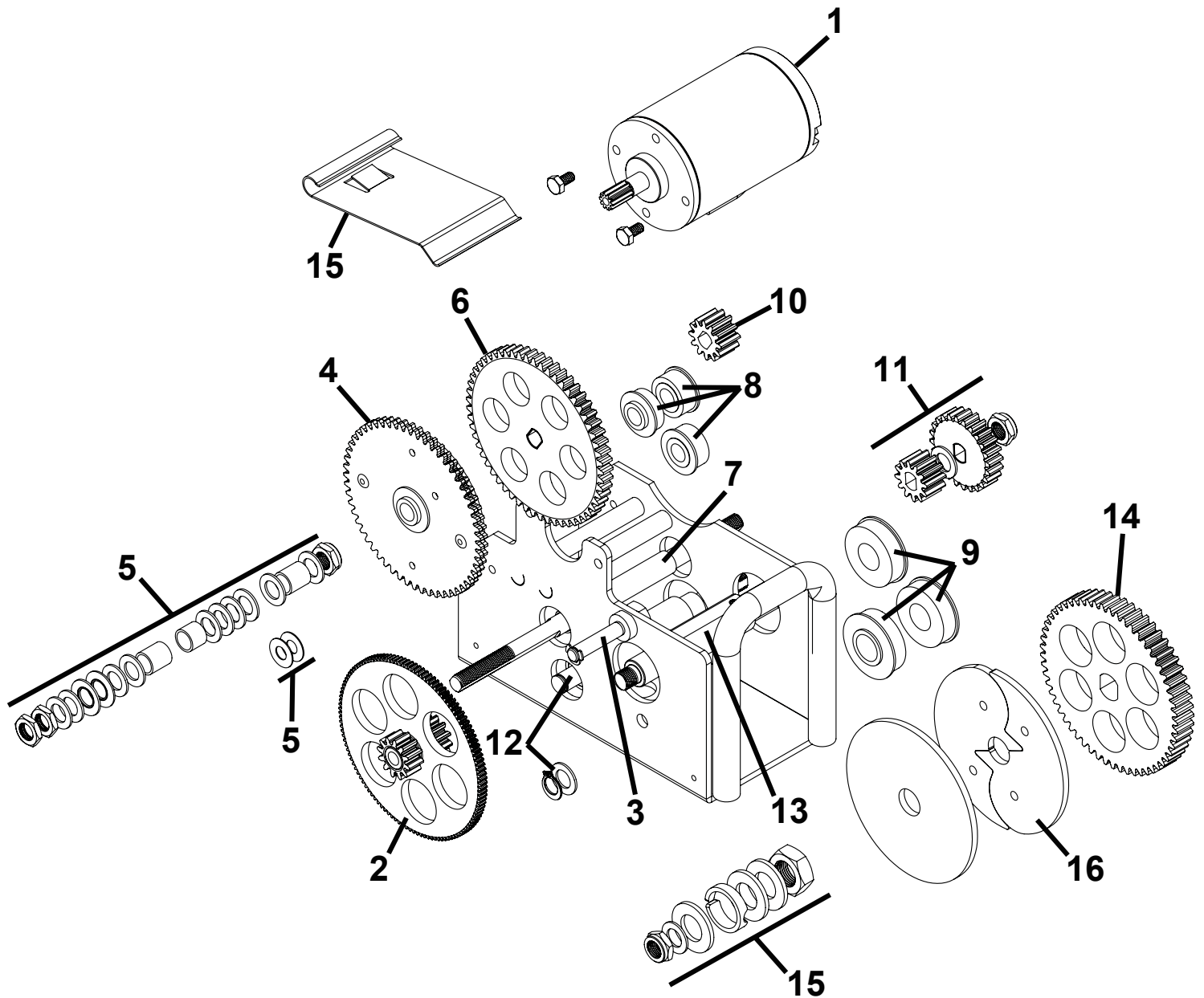
If the cable is not wound correctly, it may cause loss of power and risk damage to the level wind plate. If the cable is not correct (too loose or wound on one side), unwind the cable then rewind while keeping tension on the cable.

TROUBLESHOOTING GUIDE

Winch Does Not Operate			
A.	Confirm power to winch. 1. Check vehicle battery is fully charged. 2. Confirm connections are for tight & clean. 3. Check wires are worn or bare that may cause shorts.		Correct as required.
B.	Check circuit breaker at battery.		
	Bypass circuit breaker and test winch. Does the winch run?	Yes	If winch runs, circuit breaker is bad, replace.
	NOTICE DO NOT operate the winch without the circuit breaker. Removing the circuit breaker from the circuit is ONLY for testing.	No	Reconnect circuit breaker. Contact your authorized service center.
Load Slips			
The winch is equipped with a friction brake that hold the load when the power is off. The brake requires adjustment if the load creeps while the power is off or if the brake slips while powering the load in or out.			
A.	Load slips during retrieval.	Thrust washers and thrust bearings are worn or deformed. Replace.	
B.	Load slips back after boat is retrieved.	Clutch bearing inside the 120 gear has failed. Replace gear assembly.	
C.	Check clutch lining.		
	The clutch lining is located on the 120 tooth gear under the LHS (clutch side) of the case. Ensure that the clutch is clean free of grease.	Clean as required. If clutch lining is worn or damaged, replace the 120 tooth gear assembly.	

ILLUSTRATED PARTS LIST

INTERNAL PARTS

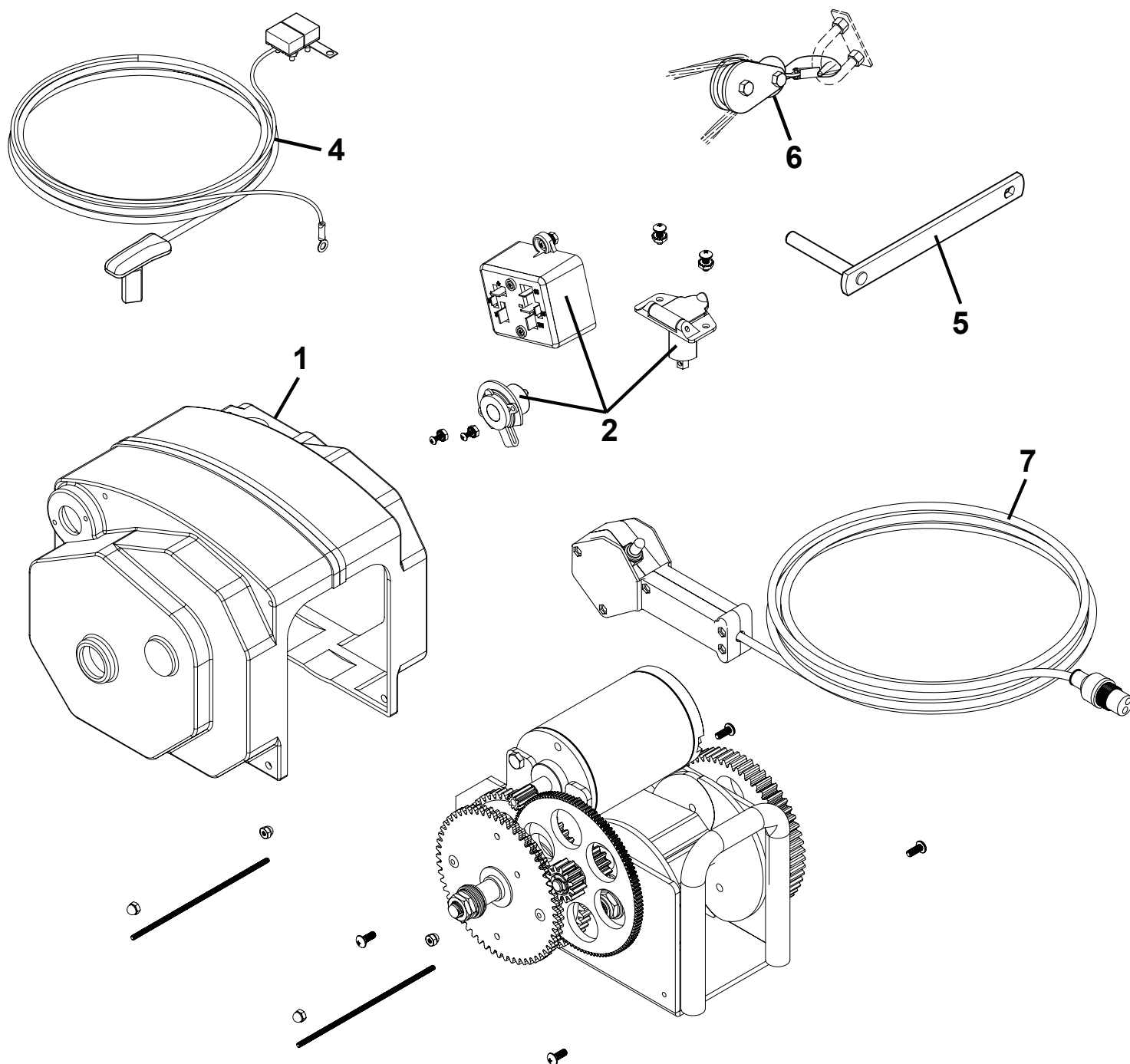


Powerwinch**915 Trailer Winch**

<i>Item</i>	<i>Description</i>	<i>915</i>	<i>Notes</i>
1	Motor Kit	R1000	
2	1st Shaft Gear Kit	R1018	
3	1st Shaft Kit	R1019	
4	2nd Shaft Blank Gear Kit	R1020	
5	1st/2nd Shaft Accessory Kit	R1021	
6	2nd Shaft 57T Gear Kit	R1006	
7	2nd Shaft Kit	R1007	
8	2nd/3rd Small Bearing Kit	R1008	
9	2nd/3rd Large Bearing Kit	R1009	
10	2nd Shaft 12T Gear Kit	R1010	
11	3rd Shaft Gear Kit	R1012	
12	3rd Shaft Kit	R1013	
13	Final Shaft Kit	R1014	
14	Final Shaft Gear Kit	R1015	
15	Final Shaft Accessory Kit	R1016	
16	Final Shaft Flange Kit	R1017	

ILLUSTRATED PARTS LIST

EXTERNAL & ACCESSORIES



3 - Includes all assembly hardware.

Powerwinch

915 Trailer Winch

<i>Item</i>	<i>Description</i>	<i>915</i>	<i>Notes</i>
1	Cover Kit	R2009	
2	Power/Switch/Relay Kit	R2010	
3	Case Hardware Kit	R2008	
4	Wiring Harness Kit	R3001	
5	Crank Handle Kit	R3008	
6	Pulley Block Kit	R3000	
7	Remote Control Kit	R3002	

WARRANTY

SFEG warrants to the FIRST retail Purchaser that the Powerwinch Product described in this manual is free of defects in material and workmanship within the terms and conditions as set forth below. SFEG's obligation under this warranty is limited to the repair or replacement, at SFEG's option, of any defective component within the stated warranty period. THIS WARRANTY IS NOT TRANSFERABLE.

1. Duration

- a. 1 year on parts.
- b. SFEG will pay the transportation charges for return shipment to the purchaser of any product received for legitimate warranty repair.

Warranty duration is not extended by the length of time the product is not in use or the time that the purchaser is deprived the use of the product. The duration of coverage is determined by the date of the original product purchase, not the date of repairs.

2. What Is Covered Under This Warranty?

Defects in the manufacturer's material and workmanship of product under normal use, and which occur within the duration of the warranty period.

3. What Is Not Covered Under This Warranty?

- a. Improper installation and/or any consequent damage or failure that results from improper installation of the product.
- b. Normal wear.
- c. Conditions that are not related to the material or workmanship of the product: including any failure that results from an accident, wind, rain, or other acts of God.
- d. Purchaser's abuse, including but not limited to neglect; failure to operate, use or maintain the product in accordance with the instructions provided with the product.
- e. Any component not sold or manufactured by SFEG.
- f. Any failure that results from the use of another manufacturer's product with a SFEG product that is not specifically approved by SFEG.
- g. Any incidental, indirect, or consequential loss, damage or expense that may result from any defect, failure or malfunction of the product.
- h. The removal or alteration of any product component or device. In the event of such removal or alteration, this warranty is void.
- i. Any expense related to delivery or pick-up of product to/from the service dealer.

4. Responsibilities of the Purchaser

IN ORDER FOR THE WARRANTY TO BE HONORED, THE PURCHASER MUST HAVE PROOF OF PURCHASE. FAILURE TO PROVIDE THE REQUIRED DOCUMENTATION MAY DELAY OR VOID ANY WARRANTY CLAIM.

- a. Retain dated proof of purchase for the product, and provide it as requested.
- b. Perform "Periodic Maintenance" as specified in Owners Manual.
- c. Use reasonable care in maintenance, operation, use and storage of the product in accordance with the instructions contained in the owner's manual.

THIS WARRANTY GIVES THE OWNER SPECIFIC LEGAL RIGHTS. THE LAWS OF CERTAIN JURISDICTIONS MAY GRANT THE OWNER ADDITIONAL RIGHTS AND PRIVILEGES. Except as set forth above; SFEG makes no warranty, whether statutory or otherwise, including without limitation, any warranty of merchantability or fitness for a particular purpose. SFEG shall have no liability except to repair, replace or adjust defective products and parts. SFEG specifically excludes any liability, whether in contract, tort or otherwise, for personal injury, property damage, economic or consequential losses. SFEG has not authorized any person or company to alter the terms of this warranty.

It is SFEG's policy and practice to continuously improve the company's products and services. Therefore, SFEG reserves the right to make changes in design and components, without notice, whenever it is believed the quality of the product will be improved, but without incurring any obligation to incorporate such improvements in any product which has been shipped or in service.

For Your Records:

Dealer/Installer

NAME: _____

ADDRESS: _____

PHONE: _____

PURCHASE DATE: _____

PART NUMBER: _____

SERIAL NUMBER: _____

PRODUCT NAME/ _____

DESCRIPTION: _____

***Retain your original proof of purchase.
It is required for all warranty repairs and returns.***